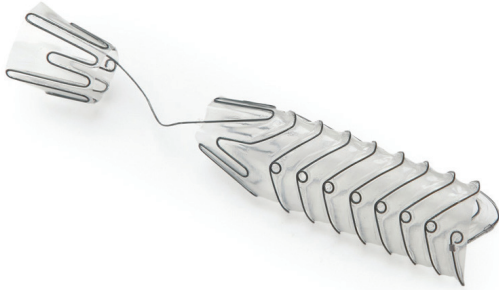
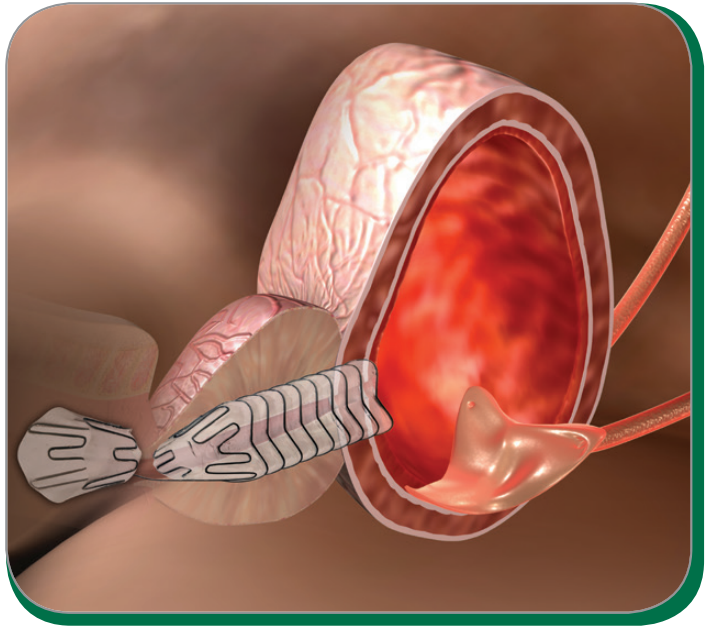


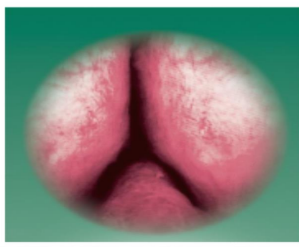
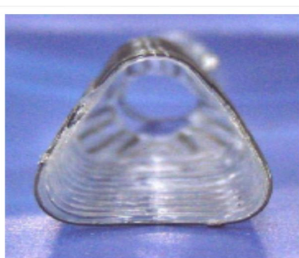
Allium™ TPS Stent



**TPS -Triangular
Prostatic Urethral stent**



1. A specifically designed triangular shaped stents for prostatic urethra
2. The stent 2 lateral surfaces apply continuous radial force that keeps a sufficient lumen for urine passage.
3. Designed to allow placement next to the sphincter without losing functionality



- ***Fully Covered*** to prevent tissue ingrowth
- ***Unique flexibility*** for excellent comfort
- ***The only triangular stents***
- ***Specially designed to perfectly fit the triangular shape of the Prostate***
- ***High radial forces***

Allium's TPS Stent:

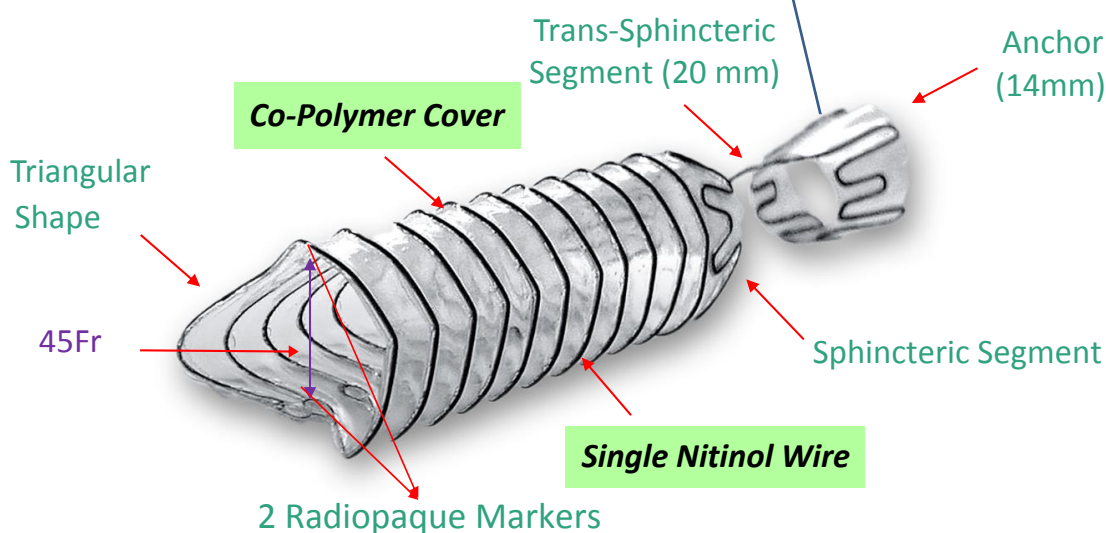
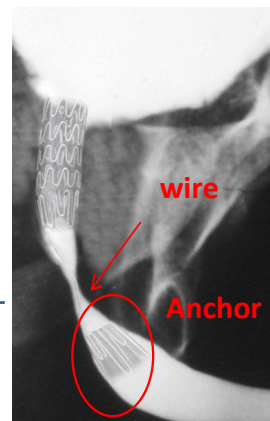


Flexibility & Strength

A Delicate Balance that allows Long Term Patency

Anchoring Mechanism

The Only Stent with A Intra-Vesical Anchor, Tailor Made to Fit the Specific Anatomy of Each Organ

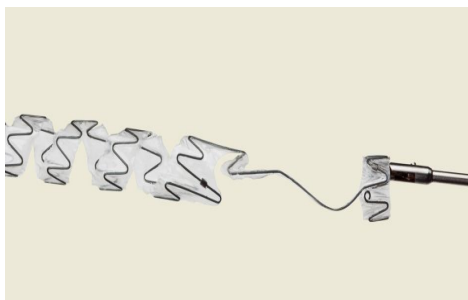


Safe Removal

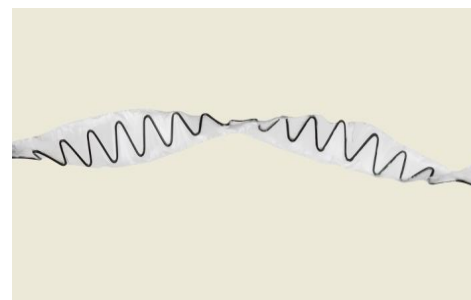
Simple and Non-Traumatic Unraveling Mechanism



Step 1



Step 2



Step 3



Contact Info:

2 Ha-Eshel St., PO Box 3081
Caesarea Industrial Park South 38900 Israel

www.allium-medical.com

CE Worldwide patents and patents pending.